

# Desire

JEWELLERY & SILVERSMITHING FAIR



**Winchester** GUILDHALL  
**27-29 November** 2009

Show Guide

[www.desirefair.com](http://www.desirefair.com)

CRAFT  
IN FOCUS

**W E L C O M E**

---

...to our first **Desire Fair at Winchester**. We are delighted, and indeed privileged, to have such a wealth of talented exhibitors at the show working in so many different media, and all having a genuine passion for the work that they create. Desire provides the opportunity of discussing a purchase direct with the maker of the item, rather than simply purchasing from an in store display.

Discussion with the makers will reveal that each piece is the result of an exciting mix of inspiration, learning, discovery and creative talent, which will give an understanding that every piece has its own unique story. Commissioning special items is also welcomed from many of the exhibitors, allowing you to purchase something that is truly unique and special to you, and sometimes offers an opportunity to be involved in the creative process.

We trust you will like what you see here, and if you have not yet visited other Craft In Focus shows, please complete the prize draw form to receive details. In addition to jewellery, our other events feature fine art, furniture, interior accessories, textiles, fashion, ceramics, sculpture and more.

We hope you enjoy your visit to the show and look forward to seeing you again.

---

**FREE ENTRY TO DESIRE FAIR AT RICHMOND!**

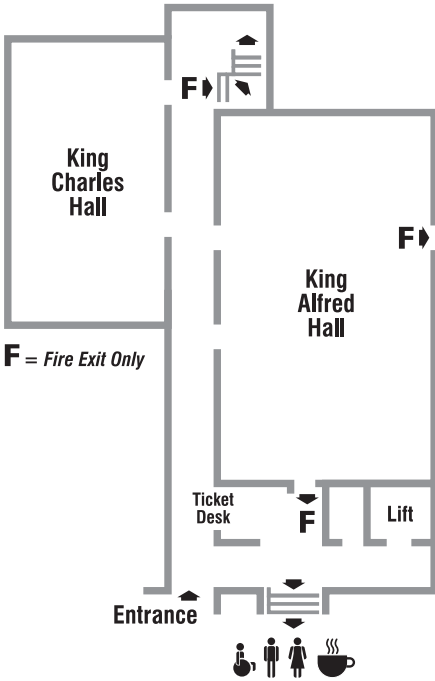
Details are shown on the back cover of this guide. If you would like to receive a complimentary invitation to this, please complete your details on the questionnaire/prize draw and post in the box provided.

**Cover image:** *Ring by Laura Bennett, Stand KA2*

**Contact the organisers:**

Craft In Focus, PO Box 942, Maidstone, ME15 0YB

T: 01622 747325 • E: [info@craftinfocus.com](mailto:info@craftinfocus.com)



## Art & Contemporary Designer Craft Show

*Purchase direct from the very  
best craftsmen in the UK*



CRAFT  
IN FOCUS



## Queen Charlotte Hall

Adult Education Centre - Parkshot

**RICHMOND** upon **THAMES**  
**4-6 December** 2009

10 am - 5 pm Daily • Adults £4.00 • Over 65's £3.00 • Under 14's Free

[www.craftinfocus.com](http://www.craftinfocus.com)

## KING CHARLES HALL

### KC1 Helene M Apitzsch GmbH

*Design jewellery in platinum and 18 ct yellow gold.*

**00 49 89 903 32 37**

### KC2 Rider & Rider

[www.platinumbodyjewellery.co.uk](http://www.platinumbodyjewellery.co.uk)



*Experienced in a wide variety of traditional techniques,*

*Steve and Glyn Rider employ these to produce limited edition modern classics and commissions in 18 ct gold, platinum and palladium.*

**020 8985 2679**

### KC3 Donna Collinson Jewellery



*Primitive iconic and very tactile. Contemporary jewellery in solid silver, bronze and gold. Inspired by pebbles, shells and fossils. Precious and semi-precious stones and oxidation provide striking contrasts.*

**01483 839 593**

### KC4 Lila Jeweller Designer Ltd

[www.lila-jeweller-designer.co.uk](http://www.lila-jeweller-designer.co.uk)



*Lila's contemporary jewellery is stunning, bold, artistic, dramatic, organic, unique and inspiring. Lila creates her art pieces with semi-precious stones, silver and gold all designed and handmade by Lila.*

**01342 826 724**

**KC5 Gemcraft**  
[www.gemcraft.biz](http://www.gemcraft.biz)



*Gemmologists creating beautifully made bespoke jewellery using 18ct gold and platinum with precious stones and diamonds. Rings, pendants and bracelets and exclusively designed matching sculpted diamond wedding and engagement sets.*

**01707 850 711**

**KC6 Carole McAllister**  
[www.carolemcallister.co.uk](http://www.carolemcallister.co.uk)



*Carole, working in her north Devon studio, sculpts molten Dichroic glass in the most fabulous colours to make vibrant jewellery as pieces of art to wear, setting them in silver.*

**01271 344 798**

**KC7 Janet Richardson**  
[www.janetrichardson.co.uk](http://www.janetrichardson.co.uk)



*Wearable, stylish jewellery that is contemporary and will last forever. Form and pattern is used to create a varied collection amongst which you'll find something you will love.*

**0118 961 9285**

**KC8 Mirri Damer**

*Contemporary, designer jewellery in silver and gold.*

**07967 906 713**

**KC9 Paul Battes**  
[www.paulbattes.com](http://www.paulbattes.com)



*Paul Battes is an award-winning, innovative, designer jewellery based in the Cotswolds. From his rural workshop he creates elegant and sculptural pieces of jewellery that are a pleasure to wear.*

**01242 604 295**

**KC10 Ulli Kaiser**  
[www.ullikaiser.co.uk](http://www.ullikaiser.co.uk)



*Strong colours and material diversity are combined in bead crochet and silversmithing. Vintage glass beads, shells, felt, gemstones and precious metals form unique pieces of bold and distinct jewellery.*

**07771 545 114**

**KC11 Angels & Co**

*PMC Jewellery inspired by nature.*

**01628 524 731**

**KC12 DeMec Ltd**  
[www.demecjewellers.com](http://www.demecjewellers.com)



*DeMec has launched a new collection, fusing the timeless elegance of Diamonds with the avant-garde Eco trend of Vegetable Ivory under the name of "Very Brilliant".*

**020 8579 9206**

**KC13 Gemma Wheeler  
Silversmith and Jeweller**

*Combines pattern and texture with form to create aesthetic pieces.*

**07732 336 377**

**KC14 Roger Morris  
[www.rogermorris.eu](http://www.rogermorris.eu)**

*Unique clamp set rings, brooches and earrings using 18ct gold and gemstones. Several pieces are combined with graphic inlaid acrylic created with laser technology.*

**01337 870 292**



**KC15 Leonie Bennett Jewellery  
[www.leoniebennett.co.uk](http://www.leoniebennett.co.uk)**

*Exploring ways in which precious metals and gemstones create and reflect patterns; Leonie's collection includes aquamarine and tourmaline in pieces that are striking, original and feminine.*

**07840 296 418**



**KC16 Sarah Herriot Design  
[www.sarahherriot.com](http://www.sarahherriot.com)**

*Sarah's skill in cutting edge 3D design technology is attracting awards and high praise for the architectural forms and quality of the designs.*

**020 7490 7181**



**KC17 Tamizan Savill**

[www.tamizan.com](http://www.tamizan.com)



*Colourful enamelled jewellery for men and women, and a range of small boxes. Subtle decoration and vitreous enamels, worth a closer look.*  
**0117 966 0107**

**KC18 Anne Morgan**  
**Contemporary Jewellery**

[www.annemorgan.co.uk](http://www.annemorgan.co.uk)



*Contemporary jewellery exploring organic texture with smooth lines. Anne's new work combines the colour and texture of semi-precious stones such as garnets and lava with bold silver centre pieces.*  
**029 207 11918**

**KC19 Esther Lord**

[www.estherlord.com](http://www.estherlord.com)



*Distinctive handcrafted silver vessels exploring balance, structure and subtle surface texturing. The delicate sheen of textured silver highlights the play of light and shadow over soft curves and angular folds.*  
**07791 341 532**

## KC20 Graeme McColm Jewellery



*Sophisticated, elegant, contemporary jewellery for women and men in silver, gold and platinum. Clean, bold, lines and beautiful stones combine to create jewellery for individuals.*

**07799 834 885**

## KC21 Brian Eburah

[www.brianeburahjewellery.co.uk](http://www.brianeburahjewellery.co.uk)



*A selection of pieces incorporating the iridescent colours of Niobium, with Silver, Gold, Precious and Semi-Precious stones.*

**01559 372 180**

## KC22 Teresa Samson

[www.teresasamson.co.uk](http://www.teresasamson.co.uk)



*Elegant, stylish silver jewellery with gold detail. Contemporary classics.*

**01227 277 985**

## KC23 Deva Priya

[www.devapriya.co.uk](http://www.devapriya.co.uk)



*Deva Priya combines her passion for sourcing beautiful gemstones with meditation during her travels to India. Her collection of precious metal gemstone jewellery is a fusion of the mystical and organic.*

**020 7354 2450**

## KING ALFRED HALL

**KAI Mirage** *Unusual sculpted glass and metal jewellery. Handmade glass beads.*  
**01244 546 194**

**KA2 Laura Bennett**  
[www.laurabennettjewellery.co.uk](http://www.laurabennettjewellery.co.uk)



*Jewellery composed from natural found objects, combined with precious metals. The collections emulate the fragility of human emotions, challenging individuals to confront their vulnerabilities, placing a physical presence to an emotion / experience.*  
**07801 497 406**

**KA3 Andrew Macgowan**  
[www.andrew-macgowan.co.uk](http://www.andrew-macgowan.co.uk)



*As a silversmith I enjoy the challenge of designing and making silverware that is functional and visually stimulating. The linear qualities and texture of bamboo inspired my latest range.*  
**07713 586 885**

**KA4 Annette Gabbedey**  
**Goldsmiths**  
[www.annettegabbedey.com](http://www.annettegabbedey.com)



*Annette's designs have a timeless quality, she can create your perfect design using gold, platinum and silver to a high standard of craftsmanship. Take a look at her fantastic website.*  
**01373 454 145**

**KA5 Gwydr**  
[www.gwydr.com](http://www.gwydr.com)



Reviving the art of stained glass. Stained glass pendants cradled in a jeweller's solder of tin and silver, decorated with sterling silver designs. Fresh and exciting. Handcrafted in Wales.  
**0844 335 0646**

**KA6 Lorna Henderson**  
[www.lornahenderson.co.uk](http://www.lornahenderson.co.uk)



Elegant and distinctive jewellery designed and created by weaving forged silver and hand-dyed aluminium flowers with semi-precious gems. Designs are inspired by the colours, forms and textures of nature.  
**07894 353 460**

**KA7 Liz Tyler**

Designer jewellery with a sense of movement in the flow of the design.  
**01258 820 222**

**KA8 Brett Payne**  
[www.brettpayne.com](http://www.brettpayne.com)



Brett Payne's strikingly original candlesticks are individually hot forged, by hand in silver. They are designed for modern living - visually stunning and disarmingly practical.  
**0114 270 1088**

## **KA9 Lavan Designer Jewellery**

[www.lavanjewellery.co.uk](http://www.lavanjewellery.co.uk)



*Individually handmade and designed gold and sterling silver jewellery.*

**01280 815 499**

## **KA10 Janna Hodgson**

[www.jewellerythatworks.com](http://www.jewellerythatworks.com)



*Kiln-fired enamel jewellery made by Janna Hodgson.*

**01223 895 895**

## **KA11 Maria Helena Spector Jewellery**

[www.mhspector.co.uk](http://www.mhspector.co.uk)



*Maria designs and makes one-of-a-kind or very limited edition jewellery, using hand finished gemstones and hand made sterling silver beads. She also melts or forges silver on to the stones.*

**020 7263 3634**

## **KAI2 Peter & Sandra Noble**



*Original designs, handcrafted by Peter and Sandra Noble using 18 ct gold, platinum, diamonds, enamel and pearls; featuring rare and unique materials such as green gold, paraiba tourmaline and coloured diamonds.*

**01326 290 050**

## **KAI3 Martyn Pugh** [www.martynpugh.co.uk](http://www.martynpugh.co.uk)



*My silverware and jewellery uses the purity and geometry of natural form and the malleability of precious metals to produce flowing functional shapes in silver, gold, platinum, palladium, diamonds and coloured stones.*

**01527 502 513**

## **KAI4 Oria Jewellery**

*Contemporary, fine jewellery using ethically sourced gold, silver and gems.*

**020 8874 4203**

## **KAI5 Louise Chesshire** [www.louisecheshire.co.uk](http://www.louisecheshire.co.uk)



*Louise Chesshire's stylish and award-winning silversmithing strongly references the plant world, and every piece is handmade in her workshop in Birmingham's historic Jewellery Quarter.*

*Commissions welcome.*

**07855 022 162**

## **KAI6 Maurice Ridgway Jewellery**



*Distinctive jewellery using the inherent beauty of natural gemstones combined with silver or gold to create striking necklaces, bracelets, earrings and rings.*

**01332 781 292**

## **KAI7 Jennifer Kidd [www.jenniferkidd.com](http://www.jenniferkidd.com)**



*Function and a sense of unity are integral to Jennifer's contemporary jewellery and silverware. With distinctive strong and simple designs combined with a tactile quality.*

**07708 568 972**

## **KAI8 Prue Biddle [www.pruebiddle.com](http://www.pruebiddle.com)**



*Jewellery to celebrate simplicity. Individually handmade pieces that are easy to wear in silver, gold or mixed metals some with lovely mixtures of semi-precious stones.*

**01935 881 350**

## **KAI9 Julia Lloyd George**



*Julia's work has a strong, simple style which gives it a timeless appeal. Her pieces are beautifully made with a tactile quality to them. She also does a lot of bespoke pieces.*

**020 7373 5093**

## KA20 Andrea Jones

[www.andreajones-jewellery.co.uk](http://www.andreajones-jewellery.co.uk)



*Jewellery using contrasting combinations of colour and texture either in the form of different coloured metals or the addition of semi-precious stones, diamonds or cold enamel.*

**0121 355 5159**

## KA21 Gravatt Jewellery

*Individual, one-off pieces in gold, diamonds, gems and pearls.*

**01963 351 528**

## KA22 Rachel Gogerly

[www.rachelgogerly.co.uk](http://www.rachelgogerly.co.uk)



*Fine enamel work on precious metals, combining contemporary design with classic enamel techniques. The Collection includes small work and jewellery for both men and women for all occasions.*

**01527 502 266**

## KA23 Rebecca Joselyn

*A range of quirky contemporary silverware objects for display and use within the home.*

**0778 878 2715**

## KA24 Shona Marsh

*Elegant and contemporary silverware for gifts and the home.*

**07966 952 793**

## **KA25 Helen Brice Designs**

[www.helenbrice.co.uk](http://www.helenbrice.co.uk)



*Delicate and colourful gem set jewellery in gold and silver. The 'Precious Collection' blends classical design with contemporary detailing. Helen welcomes bespoke commissions for unique wedding and engagement rings.*

**07880 717 352**

## **KA26 Jacks Design**

[www.jacksdesign.co.uk](http://www.jacksdesign.co.uk)



*Contemporary designer jewellery in 18ct gold and platinum. Beautifully handmade pieces using colourful precious and semi-precious gemstones.*

**0117 924 6536**

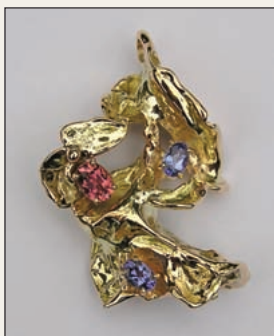
## **KA27 Lucy Sylvester**

*Jewellery, spoons and buckles inspired by nature.*

**01295 263 848**

## **KA28 Gillery**

[www.gillery.co.uk](http://www.gillery.co.uk)



*Local jeweller Gill Mallett uses molten metals to create her innovative designs in silver, gold, platinum and palladium and offers 'melt your own gold' workshop sessions to personal clients.*

**01202 873 917**

**KA29 Daniela Dobesova**  
[www.danieladobesova.com](http://www.danieladobesova.com)



*Utilising a range of wire forming and coiling techniques, Daniela exploits the properties of materials and forms, such as the tension and elasticity of the spiral, to create elegant and innovative jewellery.*

**01344 291 888**

**KA30 Liz Hancock**

*Silver jewellery with gold, gemstones and texturing.*

**020 8879 3588**

**KA31 Cathy Beckett**

*Bold contemporary mix of enamel, silver and gold.*

**07780 688 078**

**KA32 Karina Gill**

*Etched metal bowls & silver jewellery set with semi-precious stones.*

**01258 817 669**

**KA33 Alexandra Simpson**  
[www.alexandrasimpson.com](http://www.alexandrasimpson.com)



*Coutts New Jeweller Award Winner (2009) Alexandra Simpson designs and makes enchanting jewellery inspired by nature and Art Nouveau. Sparkling gems, thoughtfully placed within fine metals enhance these delicate creations.*

**07944 877 927**

**KA34 Jane Martin Jewellery**  
[www.martinarts.co.uk](http://www.martinarts.co.uk)



*Jane is a jeweller and beadmaker using gold and silver with precious and semi-precious stones creating contemporary necklaces, earrings and bracelets inspired by the ancient past.*

**01803 865 788**

**KA35 Liesel Barker Glass and Silver**

*Silk-screened kiln fused glass combined with sterling silver*  
**01225 852 695**

**KA36 Lizzie Kershaw Jewellery**

*Elegant, contemporary handmade silver and gold jewellery inspired by nature*  
**0781 377 62 74**

**KA37 Fran Barker Design**  
[www.franbarkerdesign.co.uk](http://www.franbarkerdesign.co.uk)



*Fran's 'Peacock' collection represents a powerful elegance. Capturing luxurious gemstones in beautiful metalwork whilst reflecting the stunning colours and forms of the peacock feather. Work combines silver and gold.*  
**07748 821 358**

**KA38 Jesa Marshall Jewellery**  
[www.jesamarshall.co.uk](http://www.jesamarshall.co.uk)



*Jesa Marshall combines precious metals with quality gemstones and tiny creatures to create beautifully fluid, sculptural little pieces of quirky magic which truly indulge her love for dark fairytales.*  
**07785 550 771**

**KA39 Karen Dell'Armi Contemporary Jewellery**  
[www.dellarmi.co.uk](http://www.dellarmi.co.uk)



*Fresh, new, bold and sculptural contemporary silver jewellery. Inspired by architecture and geometric shape and form juxtaposed with organic and tactile surface patterns. Pieces are bold yet lightweight to wear.*  
**02920 759 212**

**KA40 Susan Beale**

*Whitened silver candleholder. Simply understated elegance is an evolution of my circles collection.*

**07979 866 892**

**KA41 KFD Jewellery**

**[www.kfdjewellery.com](http://www.kfdjewellery.com)**



*Contemporary jewellery in silver and gold. Elegant designs inspired by nature. The newest range, Mellow Moods, incorporates cold enamel to inject colour and mood into the pebbled beach influenced designs.*

**01353 777 176**

**KA42 Saskia Shutt**

*Elegant chunky, often gemset jewellery. Commissions and remodelling welcome.*

**07939 722 040**

**KA43 Almost Perfect**  
**[www.almostperfect.co.uk](http://www.almostperfect.co.uk)**



*Maritime themes and materials are reflected in Cornish artist Rose Cecil's jewellery. Rose's fine art background gives the pieces a sculptural look, celebrating natural forms and textures.*

**01736 732 872**

**KA44 Olivia Lowe**  
**[www.olivialowe.co.uk](http://www.olivialowe.co.uk)**



*Beautiful sculptural vases that create an exciting, contemporary focal point.*

**07939 533 878**

# Desire

JEWELLERY & SILVERSMITHING FAIR



*Purchase direct from the UK's leading designer makers,  
many of whom have not exhibited with us before.  
For FREE ENTRY see page 2 of this guide.*

**Richmond  
Upon Thames**  
**Queen Charlotte Hall**  
**5-7 March 2010**